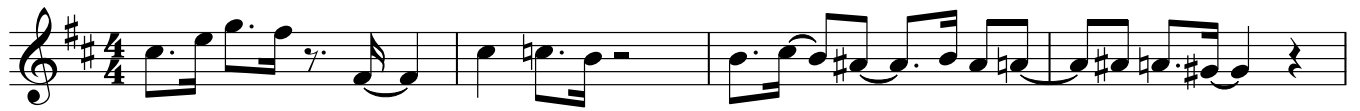


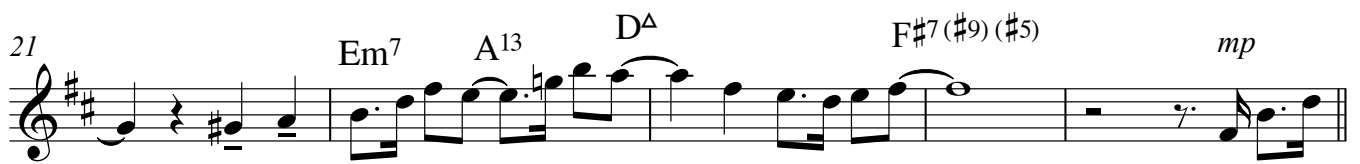
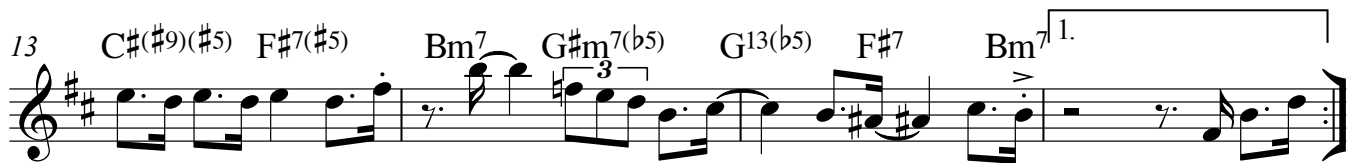
# Bari/Alto Sax

COMPOSER - D NASH PRS

# The New York Walk



A



C



New York Walk  
BARI/ALTO SAX

34 **D** C#(#9)(#5) F#7(#5) Bm7 G#m7(b5) G13 F#7(#5) F9(b5) E9  
Open Jazz

38 C#(#9)(#5) F#7(#5) Bm7 G#m7(b5) G13(b5) F#7 Bm7

42 C#(#9)(#5) F#7(#5) Bm7 G#m7(b5) G13 F#7(#5) F9(b5) E9

46 C#(#9)(#5) F#7(#5) Bm7 G#m7(b5) G13(b5) F#7 B7

50 **E** F#m11(add3) B7 E^13 C#m7

54 Em7 A13 D^ F#7(#9)(#5) F#7(#9)(#5)

58 **F** C#(#9)(#5) F#7(#5) Bm9 G#m7(b5) G13 F#7(#5) F9(b5) E9

62 C#(#9)(#5) F#7(#5) Bm7 G#m7(b5) G13(b5) F#7 Bm7

Dal. al

66 Bm7 G#m7(b5) G13(b5) F#7 Bm7 G#m7(b5) G13(b5)

69 F#7 Bm7 G#m7(b5) G13(b5) F#7 F#7(#5) Bm7